

Luxtronik



Hermes (CLS)

30w-60w

Spec Sheet

Version 1.0
April 20, 2017

Luxtronik Technical Department

Hermes is our continuous trunking light system, engineered to deliver brilliant lighting performance and bring an elegant, understated design element to a work or retail space. The system can be tailored to many environments whilst remaining future-proof, cost effective and easy to deploy in both retrofit projects and new builds.

Features & Benefits

- High efficacy at >130 lm/W
- Sleek and stylish design
- Durable powder painting
- Built-in emergency unit available upon request
- Simple installation and maintenance
- 0-10V or DALI Dimming options and compatible with all leading sensor brands
- Seven types of optics covering a wide range of illumination performance requirement

Applications

Designed for low or high ceiling applications such as;

- Warehouse racking area
- Production areas
- Logistic centers
- Storage facilities
- Car Showrooms
- Supermarkets

Technical Specification

Description	CLS Continuous Lighting System		
Recommended Applications	Industrial and retail applications		
Trunking Pole Options	5 x 2.5mm ² / 7 x 2.5mm ² / 11 x 2.5mm ²		
Luminaire Model Number	CLS-LUM-30W	CLS-LUM-40W	CLS-LUM-60W
Luminaire System Power (+/- 2W)	30w	40W	60W
Typical Luminous Flux	4200lm	5600lm	7800lm
Luminaire Efficacy	140lm/w	140lm/w	130lm/w
Light Source	Philips Lumileds / Osram LED		
Correlated Colour Temperature	3000K, 4000K, 5000K, 6500K		
Colour Rendering Index	> 80		
Light Distribution Options	Narrow (30°x30°), Medium (60°x60°), Wide (90°x90°), Diffused (120°x120°), Linear asymmetric (30°x90°), Narrow asymmetric (15°x110°), Single asymmetric (25°), Double asymmetric (2 x 25°)		
LED Junction Temp.	≤75°C (@ Ta=25°C)		
Driver	Philips Xitanium		
Input Voltage Range	220-240VAC 50/60Hz		
Power Factor Correction	0.95		
Electrical Class	I		
Surge Protection	2KV Mains surge capability (L/N-Ground)		
Driver Tc	75°C		
Dimming Control options	1-10V, DALI		
Emergency	Available (3 hours @ 10% light output)		
Ambient Operating Temperature	-40°C to +40°C		
Ambient Storage Temperature	-25°C to +60°C		
Housing material	Extruded Aluminium		
Optical Lens material	Polycarbonate		
Finish	White or Black powder coating (other RAL colour available upon request)		
Ingress Protection (IP)	IP20		
Certification	CE		
Batch Coded	Yes		

Accessories

End caps



Luminaire end cap
CLS-ECA-LU



Trunking end cap
CLS-ECA-TR

Blank plate

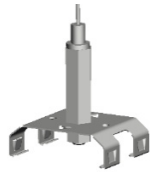


1042mm & 2084mm

Mounting



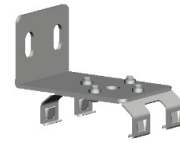
Surface mounted
CLS-MOU-SM



Wire suspension
CLS-MOU-WS



Chain suspension
CLS-MOU-CS



Surface mounted
CLS-MOU-SM

Sensor

For full technical specifications see sensor data sheet

Interface



CLS-INT-FM-05-WH



CLS-INT-FM-10-WH

Max Weight: 10kg

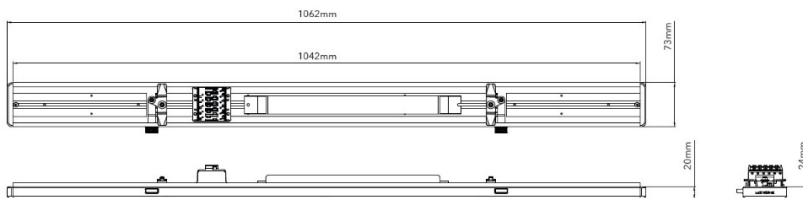
Function: For attaching third party luminaires to the trunking power rail

Mounting solutions: Central hook x 1 and 2 x slots for fixing bolts.

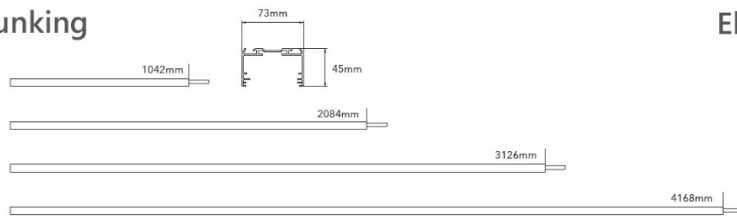
Customized plates available on order

Dimensions

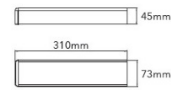
Luminaire



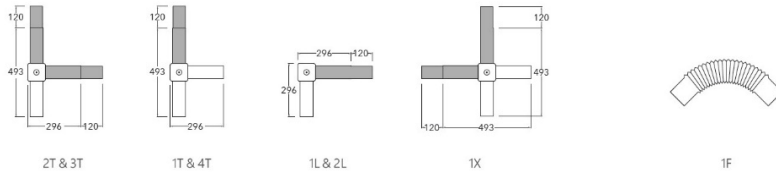
Trunking



Electrical feed



Nodes

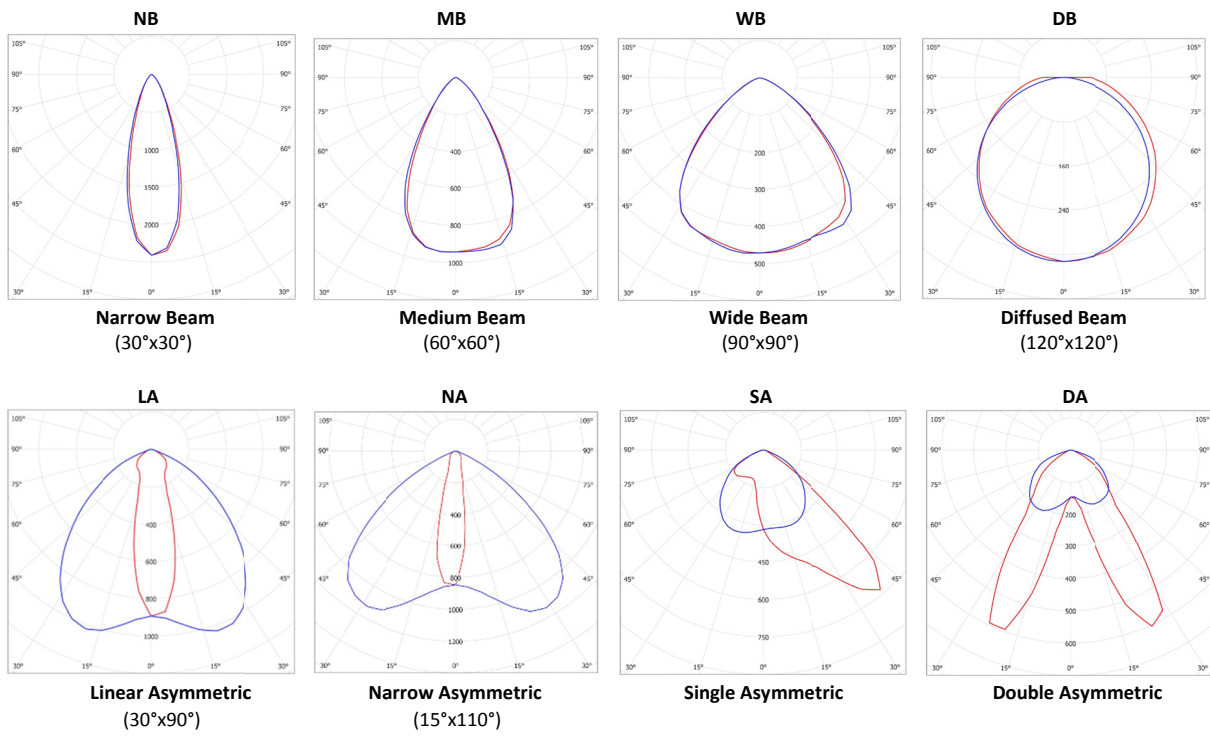


Continuous Row Configurations

Components required for different length continuous configurations

Length of light line (meter)	Max Luminaires (1042mm)	Trunking sections				Min. Mounting brackets	Suggested AC Electrical feeds
		1042mm	2084mm	3126mm	4168mm		
1.0	1	1				2	1
2.1	2		1			2	1
3.1	3			1		2	1
4.2	4				1	2	1
5.2	5		1	1		4	1
6.3	6		1		1	4	1
7.3	7			1	1	4	1
8.3	8				2	4	1
9.4	9			3		6	1
10.4	10		1		2	6	1
11.5	11			1	2	6	1
12.5	12				3	6	1
13.5	13		1	1	2	8	1
14.6	14		1		3	8	1
15.6	15			1	3	8	1
16.7	16				4	8	1
17.7	17			3	2	10	1
18.8	18		1		4	10	1
19.8	19			3	4	14	1
20.8	20				5	10	1

Photometrics



Intentionally blank

Ordering Information

Component	Product ID	Length	Circuit	Finish
Trunking	CLS-TRU	1L = 1042mm	5P = 5 Pole	WH = White
		2L = 2084mm	7P = 7 Pole	BL = Black
		3L = 3126mm	11P = 11 Pole	
		4L = 4168mm		
		EF = AC Electrical Feed		

Component	Product ID	Length	Finish
Trunking Blank End	CLS-TRU	BE = Blank End (1042mm)	WH = White BL = Black

Component	Product ID	Power	Color Temp	Optics	Control	Finish	Emergency
LED Luminaire	CLS-LUM	30W	30K = 3000K	NB = Narrow Beam (30°x30°)	ND = Non-Dimmable	WH = White	EM = 3Hr back up
		40W	40K = 4000K	MB = Medium Beam (60°x60°)	VD = 1-10V Dimmable	BL = Black	
		60W	50K = 5000K	WB = Wide Beam (90°x90°)	DD = DALI Dimmable		
			65K = 6500K	SA = Single Asymmetric DA = Double Asymmetric LA = Linear Asymmetric (30°x90°) NA = Narrow Asymmetric (15°x110°) DB = Diffused (120°x120°)			

(Optional)

Component	Product ID	Power	Color Temp	Optics	Control	Finish
CLS Single (Luminaire and Trunking integrated)	CLS-LUS	30W	30K = 3000K	NB = Narrow Beam (30°x30°)	ND = Non-Dimmable	WH = White
		40W	40K = 4000K	MB = Medium Beam (60°x60°)	VD = 1-10V Dimmable	BL = Black
		60W	50K = 5000K	WB = Wide Beam (90°x90°)	DD = DALI Dimmable	
			65K = 6500K	SA = Single Asymmetric DA = Double Asymmetric LA = Linear Asymmetric (30°x90°) NA = Narrow Asymmetric (15°x110°) DB = Diffused (120°x120°)		

Component	Product ID	Type	Circuit	Finish
Connection Node	CLS-NOD	1L = L Node Type 1	5P = 5 Pole	WH = White
		2L = L Node Type 2	7P = 7 Pole	BL = Black
		1T = T Node Type 1	11P = 11 Pole	
		2T = T Node Type 2		
		3T = T Node Type 3		
		4T = T Node Type 4		
		1X = X Node		
		1F = Flexible Node		

Component	Product ID	Type
Mounting Clip	CLS-MOU	WS = Wire Suspension
		CS = Chain Suspension
		SM = Surface Mount
		WM = Wall Mount

Component	Product ID	Type	Finish
End Cap	CLS-ECA	TR = Trunking End Cap	WH = White
		LU = Luminaire End Cap	BL = Black

Component	Product ID	Length	Finish
Blank Cover	CLS-BLA	1L = 1042mm	WH = White
		2L = 2084mm	

Component	Product ID	Type	Length	Finish
Interface Unit	CLS-INT	PM = Pendant Mounted	05 = 521mm	WH = White
			10 = 1042mm	BL = Black

Note: Actual performance may differ as a result of end-user environment and application. All values are typical values, measured under laboratory conditions at 25 °C. Specifications subject to change without notice.